

REAL ESTATE



**ROGERS COUNTY
HOME ON 2.5 ACRES
SATURDAY, OCT. 24th, 10:00 A.M.
10442 E 470 RD, CLAREMORE, OK**

Directions: From Blue Star Rd. and HWY 88 Go One Mile North To Lowery Rd. (470 Rd) Then West 5/8 Mile. WATCH FOR SIGNS!

**MINIMUM OPENING BID
\$ 45,000.00**



OPEN HOUSE THURSDAY, OCTOBER 1st, 5:00 To 7:00 P.M.

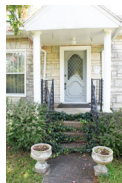
OPEN HOUSE SUNDAY, OCTOBER 4th, 1:00 To 3:00 P.M.

OPEN HOUSE THURSDAY, OCTOBER 8th, 5:00 To 7:00 P.M.

COL. SUE
DULANEY & COMPANY
Auctioneer / Broker
23707 S. Hwy 66, Claremore, OK 74019
918-342-5176



COL. SUE DULANEY
DULANEY & COMPANY
23707 S HWY 66
CLAREMORE, OK 74019



www.dulaneyandco.com